

IS-WEBCARD の IP アドレス付与方法手順

<シリアルケーブルでの設定方法>

1. IS-WEBCARD に付属されるシリアルケーブル（青）を使用し、IS-WEBCARD のシリアルポートと設定用サーバを接続します。
2. ターミナルソフトにて通信を行います。通信設定は下記になります。

【通信設定】

ボーレート：9600bps

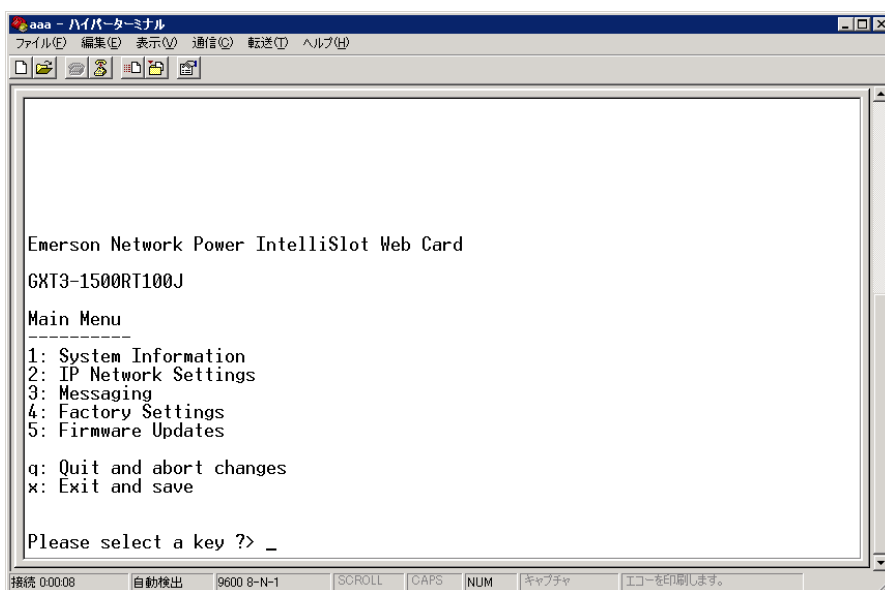
ビット長：8bit

パリティビット：なし

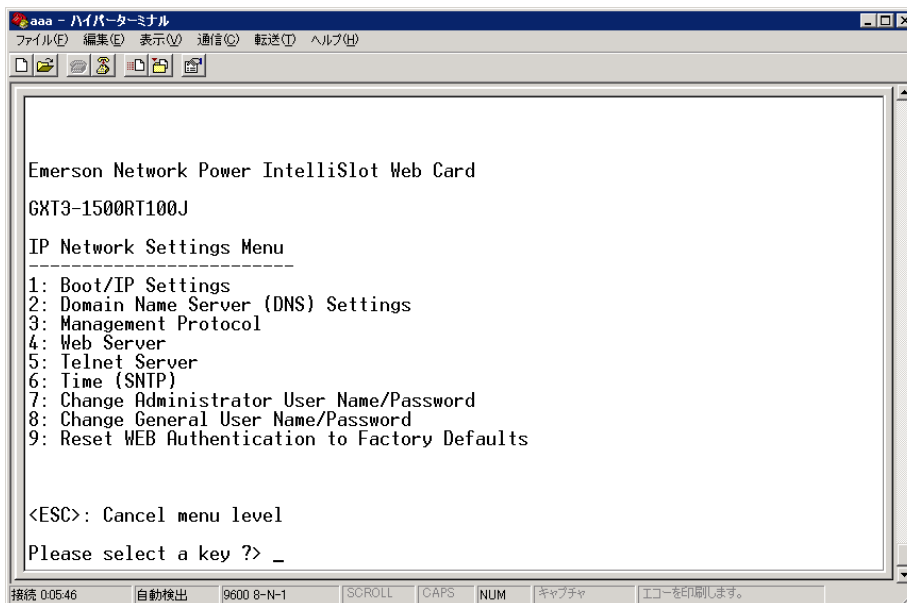
ストップビット：1

フロー制御：なし

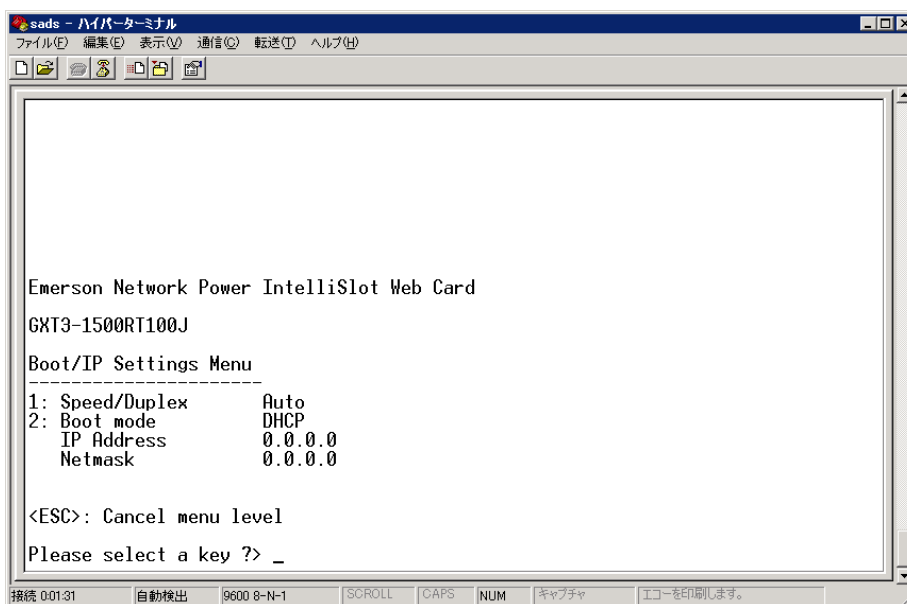
3. 設定後 IS-WEBCARD に接続します。接続後、下記トップ画面が表示されます。
Main Menu から「2:IP Network Settings」を選択。



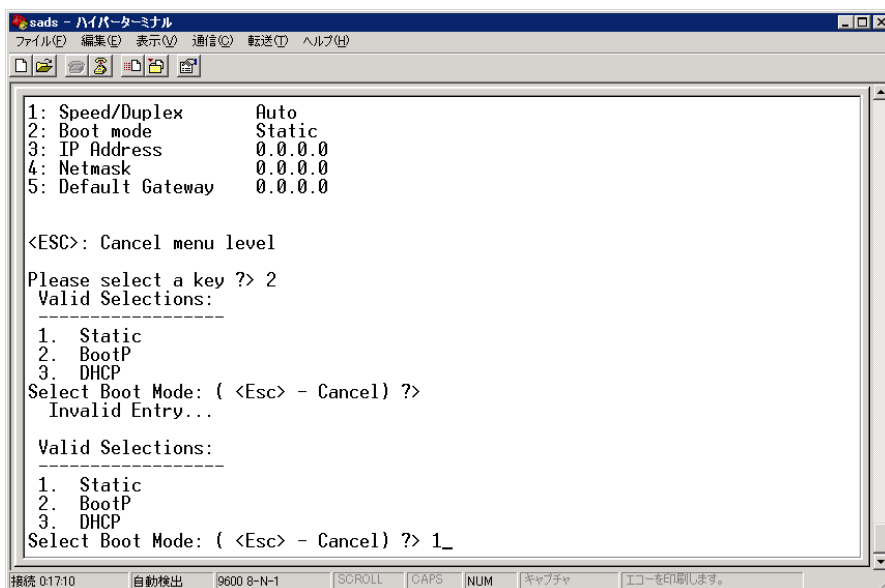
4. IP Network Settings Menu から「1:Boot/IP Settings」を選択。



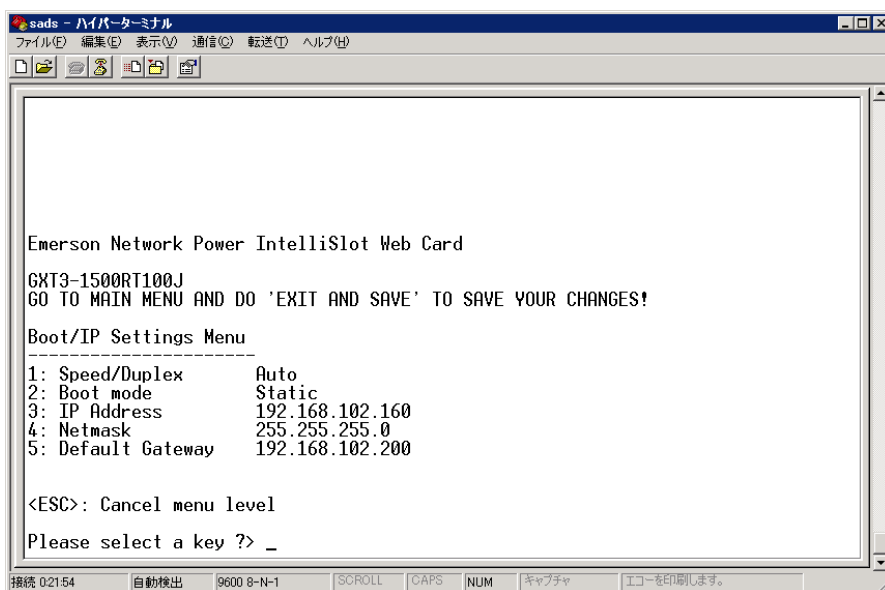
5. Boot/IP Settings Menu から「2:Boot Mode」を選択。



6. Valid Selections から「1:Static」を選択。

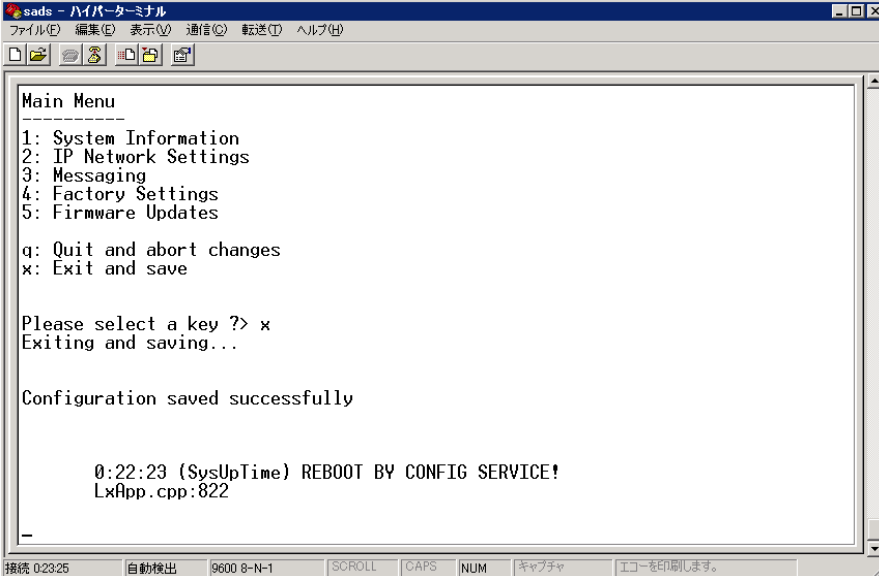


7. Boot/IP Settings Menu から「3:IPAddress」「4:Netmask」「5:Default Gateway」を設定。



8. 「3:IPAddress」「4:Netmask」「5:Default Gateway」設定終了後は、Esc キーで、トップ画面まで戻ります

9. Main Menu より「X:Exit and save」を行います。



```
sads - ハイパーターミナル
ファイル(F) 編集(E) 表示(V) 通信(O) 転送(D) ヘルプ(H)
[Icons]
Main Menu
-----
1: System Information
2: IP Network Settings
3: Messaging
4: Factory Settings
5: Firmware Updates
q: Quit and abort changes
x: Exit and save

Please select a key ?> x
Exiting and saving...

Configuration saved successfully

0:22:23 (SysUpTime) REBOOT BY CONFIG SERVICE!
LxApp.cpp:822
-
```

接続 02325 自動検出 9600 8-N-1 SCROLL CAPS NUM キヤプチャ エコーを印刷します。

自動的に IS-WEBCARD がリブートし、“Web Server Ready!” “SNTP task started!” の表示が出れば、再起動が完了です。

<WEB アクセスでの設定方法>

1. IS-WEBCARD に WEB ブラウザにてアクセスします。
初期 ID および初期パスワードは“Liebert”になります。
2. configure タグを選択し、左ペインの Network Settings をクリックします。
3. 右側ペイン上の Edit のボタンをクリックします。

EMERSON Network Power Liebert.

monitor control **configure** event log support

Agent Information:
Uninitialized
Uninitialized
Uninitialized
192.168.102.160

Device Status:
Load Protected:
No Alarms Present

Configuration Categories:
Uninitialized
Agent Information
Factory Defaults
Firmware Update
Web
TFTP
Network Settings
DNS
Test
Time (SNTP)
Management Protocol
SNMP
V1 Access
V1 Traps
V3 Settings
Messaging
Email
SMS

Network Settings:

Parameter	Description
Speed/Duplex:	Speed and duplex configuration of the ethernet port. Note: Typically, the value should be set to Auto, check with your network administrator.
Boot Mode:	Mode the card boots into in order to be a network ready device. <ul style="list-style-type: none"> Static: Directly specifies the network parameters DHCP: Allows central management of network addresses and device configuration BootP: Older mechanism for central management of network addresses and device configuration
IP Address*:	Network address for the interface.
Subnet Mask*:	Network mask for the interface which divides your network into manageable segments.
Default Gateway*:	IP address of the gateway for network traffic destined for other networks or subnets.
*	The value should be obtained from your network administrator. Acceptable values consists of 4 numbers, ranging from 0 to 255, separated with a "." character. As an example "10.0.0.1".

Edit

Speed/Duplex: Auto

Boot Mode: Static BootP DHCP

IP Address: 192.168.102.160

Subnet Mask: 255.255.255.0

Default Gateway: 192.168.102.200

4. Boot Mode を”Static”にして、「IP address」「Subnet Mask」「Default Gateway」の設定を行い、save ボタンをおします。

EMERSON Network Power Liebert.

monitor control configure event log support

Agent Information:
Uninitialized
Uninitialized
Uninitialized
192.168.102.160

Device Status:
Load Protected:
No Alarms Present

Configuration Categories:
Uninitialized
Agent Information
Factory Defaults
Firmware Update
Web
TFTP
Network Settings
DNS
Test
Time (SNTP)
Management Protocol
SNMP
V1 Access
V1 Traps
V3 Settings
Messaging
Email
SMS
Customize

Network Settings:

Parameter	Description
Speed/Duplex:	Speed and duplex configuration of the ethernet port. Note: Typically, the value should be set to Auto, check with your network administrator.
Boot Mode:	Mode the card boots into in order to be a network ready device. <ul style="list-style-type: none"> Static: Directly specifies the network parameters DHCP: Allows central management of network addresses and device configuration BootP: Older mechanism for central management of network addresses and device configuration
IP Address*:	Network address for the interface.
Subnet Mask*:	Network mask for the interface which divides your network into manageable segments.
Default Gateway*:	IP address of the gateway for network traffic destined for other networks or subnets.
*	The value should be obtained from your network administrator. Acceptable values consists of 4 numbers, ranging from 0 to 255, separated with a "." character. As an example "10.0.0.1".

Save **Reset**

Speed/Duplex: Auto

Boot Mode: Static BootP DHCP

IP Address: 192.168.102.160

Subnet Mask: 255.255.255.0

Default Gateway: 192.168.102.200

5. IS-WEBCARD の再起動を行います。

The screenshot shows the Emerson Liebert web interface. The top navigation bar includes 'monitor', 'control', 'configure', 'event log', and 'support'. The left sidebar contains 'Agent Information', 'Device Status', and 'Configuration Categories'. The 'Restart' button is highlighted with a red box in the 'Configuration Categories' list. The main content area shows a 'Restart' section with a table of parameters and a 'Restart' button.

Agent Information:
 Uninitialized
 Uninitialized
 Uninitialized
 192.168.102.160

Device Status:
 Load Protected:
 No Alarms Present

Configuration Categories:

- Uninitialized
 - Agent Information
 - Factory Defaults
 - Firmware Update
 - Web
 - TFTP
 - Network Settings
 - DNS
 - Test
 - Time (SNTP)
 - Management Protocol
 - SNMP
 - V1 Access
 - V1 Traps
 - V3 Settings
 - Messaging
 - Email
 - SMS
 - Customize
 - Message
 - Restart
 - inet
 - Users

Restart:

Parameter	Description
Restart	Clicking this button will reboot the card and cause configuration changes to take effect.

Restart